

INSTRUCTION MANUAL

MODEL #HD55345

TRI-MOTOR HEPA VACUUM



-----WARNING-----

All Nikro Industries Inc. products that have rated efficiencies of 99.97% @ 0.3 microns and 99.99% @ 0.3 microns, have H.E.P.A. filters that have been individually tested to meet these minimum efficiencies.

Although all the filters have been pre-tested, the possibility of leaks or filter failure due to handling, transportation, punctures, loaded filters, moisture, wear and tear, etc., does exist.

Therefore, when using this equipment in highly sensitive areas or where any release of particles above and beyond the minimum efficiencies would be detrimental and harmful to humans, plants or property; it is strongly recommended that the units be individually tested prior to their use.

This is to assure that they are maintaining the efficiency levels, which they were designed to filter out.

FAILURE TO DO SO COULD RESULT IN SERIOUS HARM TO HUMAN LIFE, PLANT LIFE AND/OR PROPERTY.

1115 N. Ellsworth Ave., Villa Park, IL 60181

Telephone: 630-530-0558 FAX: 630-530-0740

Toll Free: 800-875-6457

OPERATING INSTRUCTIONS

Inspection

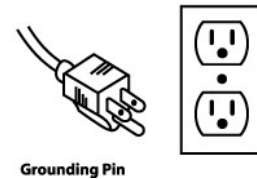
Thoroughly inspect your machine for any shipping damage. Your machine has already been thoroughly tested at the Nikro Industries manufacturing plant prior to shipping.

Electrical Specification

This machine is designed to operate on a 15 amp. 115V., 60 hz., AC circuit. A deviance of this could cause serious damage to the unit.

Grounding Instructions

This machine is equipped with a grounding type cord and three prong plug. Make sure that the plug is connected to an outlet with three receptacles designed for use with the three-prong plug. (See Illustration) Never use an adapter with machine.



Maintenance

Lubrication of this motor is not required as it is equipped with sealed bearings.

Always keep the air cooling intake screen free, not allowing any restriction of airflow. Airflow restriction will overheat and damage the motor.

To prolong the life of the H.E.P.A. filter, empty, clean, and replace bags and filters regularly as described in the following sections.

SAFETY INSTRUCTIONS

Read all safety instructions before using!

1. Electrical shock could occur if used outdoors or on wet surfaces.
2. Always store machine indoors in a dry area. If machine is dropped in water or left in rain, it should be serviced by an authorized service technician prior to plugging the unit in.
3. Prior to plugging in machine, always inspect cord for cuts and exposed wires. If these problems are found, return the machine to an authorized service technician..
4. Never use the cord as a handle, or pull the machine by using the cord.
5. Never unplug this machine or any other electrical appliance by pulling on the cord.
6. Do not wrap the cord around the dome. Wrapping the cord around the dome will restrict the motor from exhausting properly and will result in overheating and damaging the motor.
7. Keep hair, fingers, and other objects away from all moving parts and openings on this machine.
8. This vacuum cleaner should never be used in explosion-hazardous areas or to pick up combustible or flammable liquids such as gasoline, etc.
9. Never leave the machine unattended when plugged in or running.
10. Always have the switch in the OFF position before unplugging the unit.
11. Do not operate this machine with any of the openings blocked; always keep these areas free of lint and dust or any other particles that could reduce the airflow.
12. Never operate or plug in this machine or any other electrical appliance with wet hands or when standing in water.
13. This machine should never be operated without the proper filters installed in the manner described in the following pages of this manual.
14. This machine should never be serviced by anyone other than an authorized technician.
15. Use only original NIKRO replacement parts and attachments.

FILTER MAINTENANCE AND REPLACEMENT INSTRUCTIONS

Your Nikro vacuum has a five stage filtration system; Non-clinging Dacron bag filter bag, Canvas filter bag, Polyester Prefilter, Impaction filter, and HEPA Filter. These filters should be inspected every time the tank is emptied or when a significant loss of vacuum power is detected. If a decrease in vacuum power is detected, turn off the vacuum immediately. (WARNING: Continued use could cause serious damage to motor and or HEPA filter.) This loss of vacuum power could be caused by one of the following:

- a) The tank may be full and needs to be emptied.
- b) The Dacron filter bag may be clogged and needs cleaning.
- c) The canvas filter bag may be clogged and needs cleaning.
- d) The polyester prefilter may be clogged and needs to be cleaned or replaced.
- e) The impaction filter may be clogged and needs to be replaced.
- t) The HEPA filter may be clogged and needs to be replaced.
- g) The wand, hose, or intake may be clogged and needs to be cleaned.

PROCEDURES FOR REMOVING CONTAMINATED FILTERS

Caution:

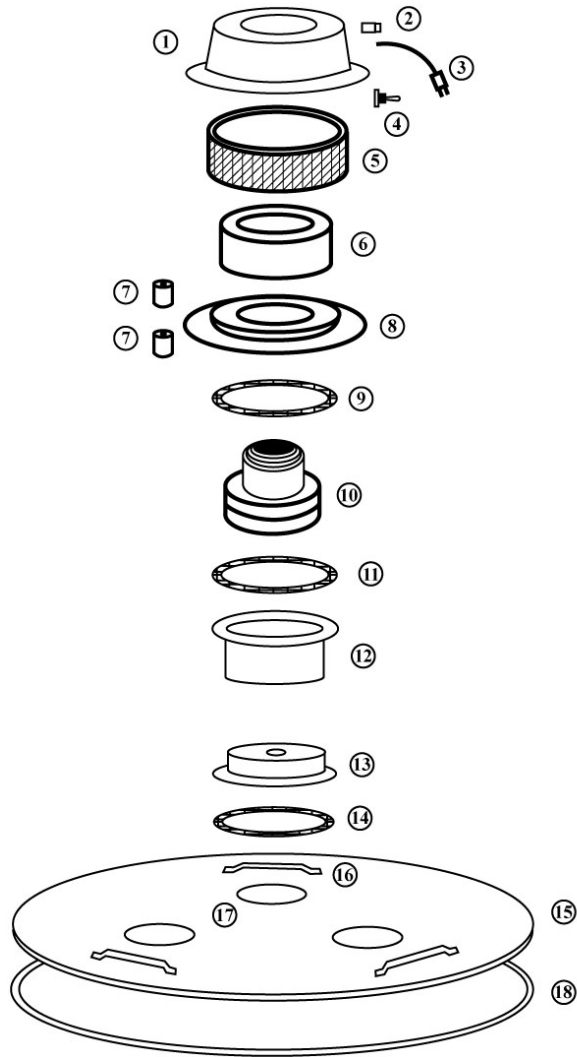
When removing contaminated filters or using this machine, you should always wear gloves, clothing, and a respirator approved for use with the particular contaminant you are working with.

FILTER REMOVAL PROCEDURES

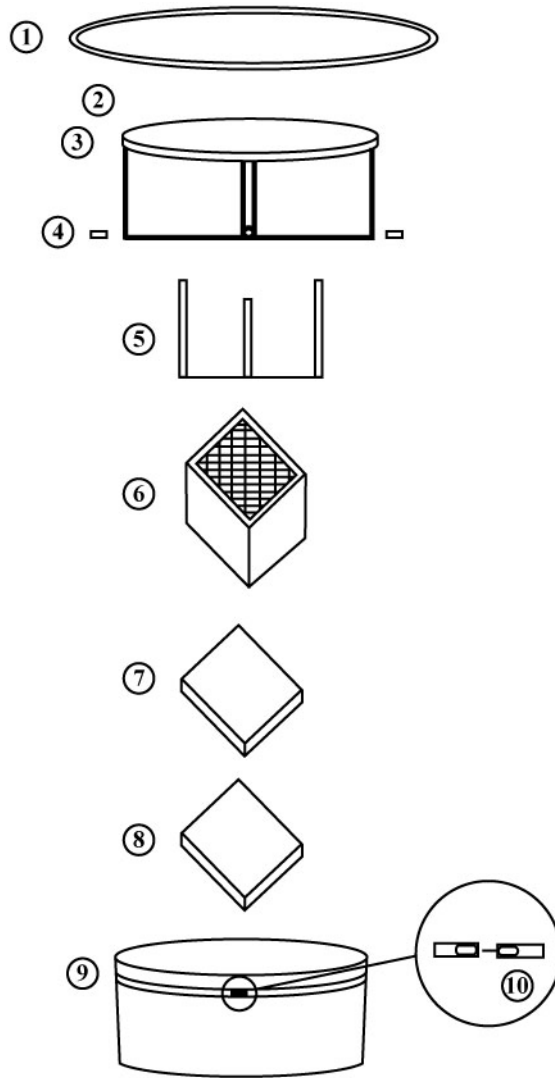
1. Turn off and unplug machine.
2. Slowly and carefully lift one side of the lid assembly from the tank. Holding the lid with one hand, reach under the lid and gently tap all around the Dacron bag, allowing any dust particles to drop into the tank.
3. Carefully lift the lid assembly off the tank. With a damp rag, wipe the underside of the lid assembly. Set it aside and dispose of the rag properly.
4. Carefully remove the Dacron filter bag from the tank. This filter bag can be washed and reused.
5. Remove the 6 mil. breather bag. This bag can be removed by gathering the top of the bag together, hold bag just below breather holes and lift out of tank. This bag can be tied or taped below the breather holes.
6. Unhook the canvas filter bag clamp and slide the bag off the lid assembly. This filter bag can be washed and reused.
7. Carefully unfasten the Velcro from the polyester prefilter and remove it from the HEPA filter. This filter can be washed and reused or discarded when material begins to separate or fall apart.
8. Remove the impaction filter and discard it.
9. Take a damp rag and wipe down the inside of the tank. Dispose of contaminated rag properly.
10. All hazardous waste material must be disposed of properly. Never put contaminated debris in a regular trash container. All debris must be placed in a plastic bag or container labeled "Hazardous Materials", and should be removed by a licensed hauler. Consult proper authorities on disposal regulations.

FILTER SET-UP PROCEDURE

1. Place HEPA filter on lid, making sure the airflow arrows are pointing towards motors
2. Slide HEPA filter-hold down bracket over HEPA and onto the four bolts. Using the locking nuts, tighten down the cage to secure the HEPA filter
3. Place the impaction filter on the HEPA filter.
4. Next fasten the polyester filter pad to the Velcro on the HEPA filter.
5. Pull the filter bag with locking band over the bag holding ring and secure into place by snapping the latch.
6. Place the plastic collection bag into the tank. Make sure the breather holes on the bag are inside the tank and the intake tube is through the tube hole in bag, allowing for materials to dump into the bag. Pull the top portion of the plastic bag over the top of the tank and roll it over the outside of the tank.
7. Take the Dacron filter bag and stretch the elastic over the top of the tank, allowing the elastic to rest on the outside of the tank. Push center of bag into the tank.
8. Set lid assembly on the tank. Snap the four latches into place.
9. Vacuum is ready for operation.

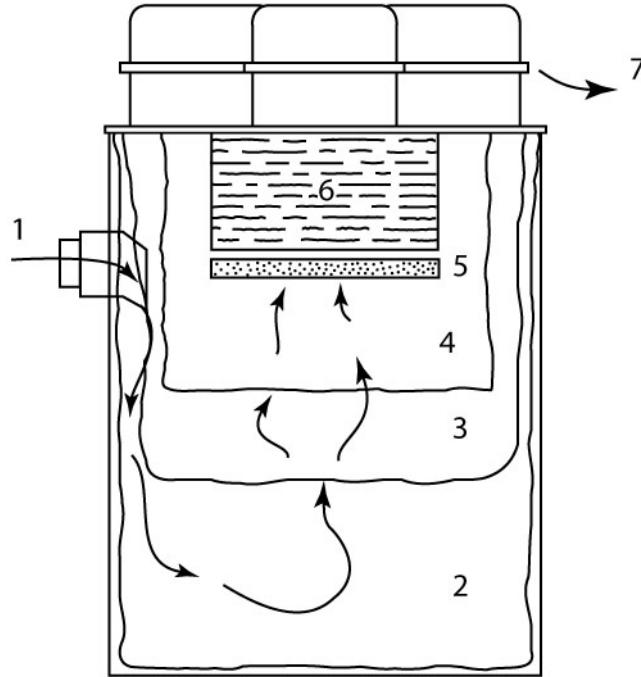


REFERENCE	PART NO.	DESCRIPTION	QTY. REQ.
1	520001	MOTOR DOME	3
2	520013	CORD STRAIN RELIEF	3
3	520010	POWER CORD	3
4	520015	SWITCH	3
5	520004	DOME FELT	3
6	520016	FOAM RING	3
7	520214	LARGE SPACER	24
8	520304	MOTOR HOLD DOWN	3
9	520029	UPPER MOTOR GASKET	3
10	520365	MOTOR	3
11	520327	LOWER MOTOR GASKET	3
12	540058	MOTOR HOUSING	3
13	520009	MOUNTING PLATE	3
14	860922	MOUNTING PLATE GASKET	3
15	860150	TRI-HEAD 55 GAL. LID	1
16	520222	LID HANDLES	3
17	860807	NON REVERSE FLUTTER VALVE	3
18	860582	LID GASKET	1

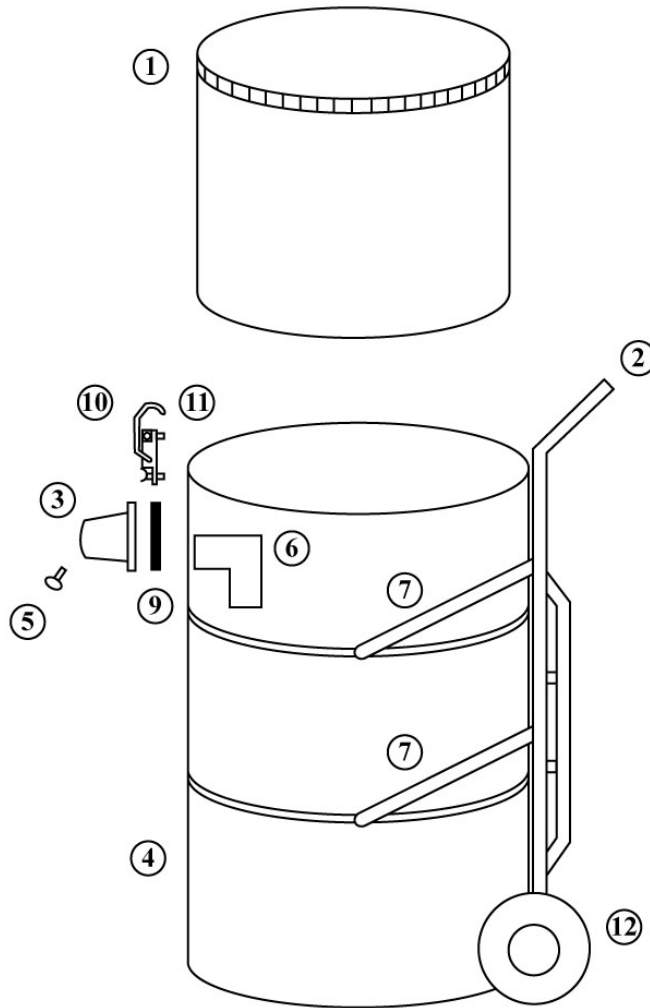


REFERENCE	PART NO.	DESCRIPTION	QTY. REQ.
1	860150	LID ASSEMBLY	1
2	860152	FILTER BAG SPACER CAGE	1
3	860942	BAG SEALING GASKET	1
4	520214	BAG HOLDING SPACER	4
5	860151	FILTER CAGE	1
6	560028	HEPA FILTER	1
7	560030	IMPACTION FILTER	1
8	560020	POLYESTER PRE-FILTER	1
9	560022	FILTER BAG	1
10	860153	FILTER BAG CLAMP	1

REPLACEMENT PARTS



- | | |
|-------------|-----------------------------------|
| 1) #520220 | 2" ALUMINUM INTAKE |
| 2) #860089 | POLY BAG W/ BREATHER HOLES |
| 3) #560029 | DACRAON FILTER BAG |
| 4) #560022 | CANVAS FILTER BAG W/ LOCKING RING |
| 5a) #560020 | POLYESTER PREFILTER |
| 5b) #560030 | IMPACTION FILTER |
| 6) #560028 | HEPA FILTER |
| 7) #520365 | 2 HP MOTOR |



REFERENCE	PART NO.	DESCRIPTION	QTY. REQ.
1	560029	DACRON FILTER BAG	1
2	860154	CART ASSEMBLY	1
3	520220	INTAKE	1
4	520308	55 GALLON DRUM	1
5	520217	INTAKE KNOB	1
6	540001	DOWN TUBE ELBOW	1
7	860808	TANK MOUNTING BRACKET	2
8	860554	3" INTAKE ELBOW (OPT.)	
9	520216	INTAKE GASKET	1
10	520019	LID LATCH	4
11	520214	LARGE SPACER	8
12	860928	REPLACEMENT WHEELS	2

WARRANTY

Nikro equipment is warranted for 2 years from the date delivered to the original purchaser. Parts, which become defective due to faulty workmanship or materials during normal use in these years will be repaired or exchanged at no charge if returned and approved by an authorized Nikro service center. The freight shall be at the expense of the customer.

This warranty does not apply to normal wear and tear, neglect, misuse, or incorrect installation. If any other replacement parts, filters or attachments are used other than original Nikro parts, this warranty will become void.

This warranty does not apply to hoses, switches, lights, sensors, or breaks in cords. All motors are subject to manufacturer's warranty. Contact Nikro Industries for assistance with these items.

Nikro disclaims responsibility for loss of production, profits, or any other costs that may indirectly occur due to the failure of this product.

NIKRO

INDUSTRIES, INC.